

4 Pair 24AWG Category6 UTP Copper Cable LSZH

Cat 6 UTP Data Cable Consists of 24AWG Solid Annealed Bare Copper Conductors, PE Insulated twisted 4 Pair, PE Cross Separator, and LSZH outer jacket with rip cord. These structured cable suitable for 10Gigabyte Ethernet Applications and compatible with all known connection systems, Ideal for high performance workstation applications including voice/data systems, Digital video, Broadband and voice over internet protocol etc.

Features

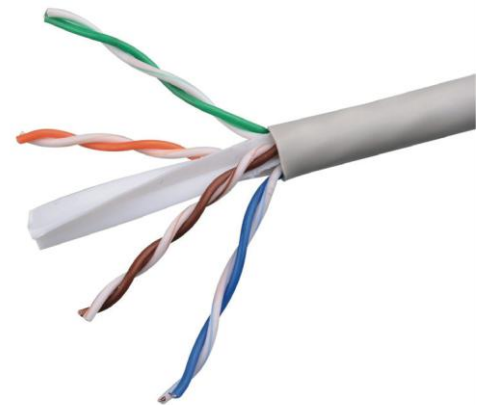
- Complies to the requirements of TIA/EIA 568 C.2 and ISO/IEC 11801 for category 6/Class E
- Flame retardant to IEC 60335-1
- Enhanced performance Specification up to 250 MHZ

Ordering Information

Parameter	Values	
Conductors	AWG	24
	Diameter mm	0.51 ± 0.006
	Material	Solid Bare Copper
Insulation	Material	High Density Polyethylene
	Diameter	1.0 ± 0.03mm
Pairs	Two Insulated conductors Twisted together to form pair	
Twisting	4 pairs laid together and separated by cross element	
Sheath	LSZH	
Cable Diameter	5.9 ± 0.30 mm	
Conductor Resistance	Max. 9.38 Ω/100m	
Conductor Resistance Unbalance	Max. 4 %	
Mutual Capacitance	Max. 5.6 nF/100m	
Bending radius	4 x overall diameter (min.)	
Breaking strength	400 N (max.)	
Capacitance Earth Unbalance	Max. 330 pF/100m	
Propagation Delay @ 1, 10, 100 & 250 MHz	Max. 570, 545, 538 & 536 ns/100 m	
Propagation Delay Skew 1 – 250 MHz	Max. 45 ns/100 m	
Temperature Range	-17°C up to +60°C	

Ordering Information

Part Code	Description
3C-C6US24GY-3	4 Pair 24AWG Category6 UTP Copper Cable LSZH



RoHS

