

Fiber Optic Sliding Patch Panels (1U-Rack Mountable)

This innovative, robust, 1U sliding panel designed to accept 2 style assemblies. With the ability to use a full array of adaptor types, this panel offers a flexible solution to the end user, enabling them to incorporate a multi-functional chassis that allows easy access during installation or rework with no disturbance of the existing cable or fibers. In addition to the array of adaptors the panel also offers multiple cable entry solutions.

Features

- Available either loaded or unloaded
- High quality construction and finish
- Simplex or Duplex variants
- Panels with numbered ports
- Complete with Fibre management kit
- Available in MM and SM
- Coupling options: FC, SC, ST, LC

Ordering Information

Part Code	Description
3C-SPPRM-02-1U	Fiber Optic Patch Panels - Rack Mount

02- 2 Cutout.



Adaptors Plates

The adaptor plates is preloaded with coupler and can snap in for installation and can be removed easily for future changes. Blank Fiber adapter plate reserve fiber adaptor panel space for future use

Features

- All adapter are having Low insertion loss.
- Compliant with tele Cordia GR-326-core,IEC,TIA/EIA
- High Precision of Mechanical Dimensions
- Available Ceramic or PB Sleeves
- Available in 4-8 Holes (According to the type of adapters)
- Suitable for SC, LC, FC, ST Adaptors)

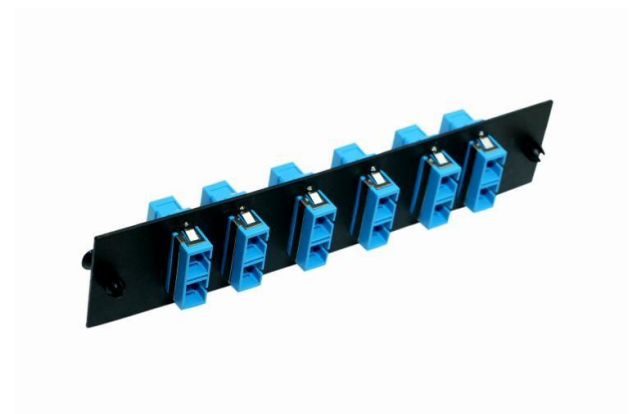
Technical Specification

Parameter	Value
Insertion loss(dB)	≤0.1
Durability	<.1db typical change , 1000 times
Operating temperature(°C)	-25 to +70

Ordering Information

Part Code	Description
3C-VV-WWX-YY-ZZ	Fiber Optic Adaptors Plates

VV – (AP-Adapter Plates, BP-Blank Plates)
 WW- (BL-Blue, BG-Beige, AQ-Aqua, VL-Violet)
 X – (S –Simplex, D-Duplex)
 YY – (SC, LC, ST, FC)
 ZZ – (01, 02, 03 ...)



Splice Tray

Splice trays use proven designs and fiber organization technology to provide optimum physical protection for fusion and mechanical splicing methods. The trays are engineered for use with both loose tube and tight buffered optical cable designs.

Features

- Protects and manages fibers and fiber splices.
- Made up of Molded Plastic.
- Reel has two ways, one is semicircle, and the other is round, Small & Simple.
- Layered Structured.
- Maximum Capacity of 24 Fibers

Ordering Information

Part Code	Description
3C-ST-ZZ	Splice Tray

ZZ- 6 – 6 Fibers, 12- 12 Fibers, 24 – 24 Fibers

