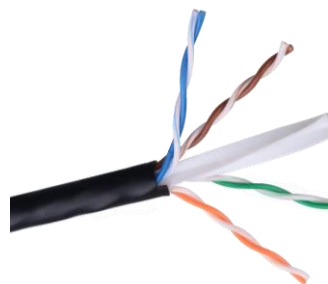


Category 6 UTP Outdoor Cable – PE



High Speed Gigabit Ethernet UTP 250 MHz Class E / Category 6 Cable Consists of HDPE Insulated 8 x 23AWG Solid Bare Electrolytic Grade Copper Conductors Twisted as 4 Pairs, Rip Cord and PE Outer Jacket. These Structured Cable Suitable for Gigabit Ethernet (1000Base-T) Requirement for Applications such as High Speed Data, Voice & Video Signals over LANs, Server Farms and Other Bandwidth Sensitive Outdoor Applications. This Cable Guarantees Category 6 Performance Ensuring Maximum Network Speed, Data Throughput and Efficiency.

Features

- Complies to ANSI-TIA 568.2-D & ISO/IEC 11801 for Class E
- Suitable of Outdoor Applications
- Cable Characterized up to 250 MHz
- Maximum throughput, reliability and performance
- 4 Pair Separator Design
- UL Listed and ETL Verified
- Covered under 3C3® Performance Warranty

Mechanical Specifications

Conductor AWG	:	23
Conductor Material	:	Solid bare Copper
Conductor Count	:	8
Insulation Material	:	High Density Polyethylene
Pairing	:	2 insulated conductor twisted together
No. of pair	:	4
Color Code	:	
Pair #1	:	Blue White and Blue
Pair #2	:	Orange White and Orange
Pair #3	:	Green White and Green
Pair #4	:	Brown White and Brown
Drain Wire	:	No

Category 6 UTP Outdoor Cable –PE

Outer Sheath	:	PE
Outer Sheath Color	:	Black
Overall cable diameter	:	6.0±0.3mm
Sequential Marking	:	At every meter
RIP Cord	:	Yes
Cross filler	:	HDPE

Electrical Specifications

Characteristic Impedance	:	100Ω±15%
Conductor Resistance(DC)	:	≤9.38Ω/100m
Resistance Unbalance	:	5% max
Mutual Capacitance	:	<5.6nF/100m
Capacitance Unbalance	:	330pF/100m
Delay Skew	:	<45ns
NVP	:	69%
Bending radius	:	<4X cable diameter
Pulling force	:	11.5kg
Maximum propagation delay @250MHz	:	490ns/90m
Maximum Attenuation @250Mhz & 90m	:	35.9dB
Return loss@250MHz & 90m	:	8.0dB
NEXT@250MHz & 90m	:	33.1dB
PS NEXT @250MHz & 90m	:	30.2dB
ACRF(ELFEXT) @250MHz & 90m	:	15.3dB
PSACRF @250MHz & 90m	:	12.3dB

Environmental Specifications

Installation Temperature	:	0°C to 50°C
Storage Temperature	:	-20°C to +60°C
Operating Temperature	:	-20°C to +60°C

Ordering Information

Product Code	Description
10203	High Speed Gigabit Ethernet UTP 250 MHz Class E PE Cable, C6