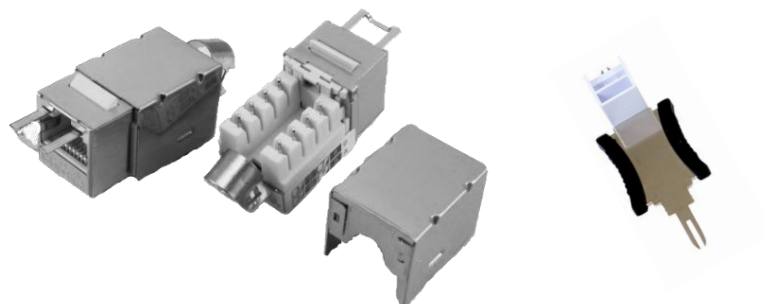


Category 6A Shielded Lockable Keystone Outlet/Key



Category 6A RJ45 Shielded Lockable Keystone Outlets are available in 90° termination design, comes with wiring diagram and conductor protection cap. It is highly recommended for Data Centers and where the physical security is a prime importance. It comes with key lock protection for both patch cord and the jack.

Features

- Complies to ANSI/TIA 568.2-D, IEC/ISO 11801 & IEC 60603-7-41
- 90-degree design.
- Die-cast housing provide EMI, RFI and excellent AXT suppression.
- Provides excellent work in suppressing internal magnetic coupling up to bandwidth of 500MHz.
- Covered under 3C3® Performance Warranty

Mechanical Specifications

Conductor Compatibility	: 22~26 AWG
IDC Punch Down Cycle	: Over 250 Cycles (min.)
Jack Insertion Cycle	: Over 2000 Cycles (min.)
Body	: Fireproof ABS UL-94V0
Hosing	: Metal
Jack	: 8P8C 50 micro inches gold plated
PCB	: FR-4 / UL-94V0
IDC Cap	: Fireproof ABS UL-94V0
IDC Body	: Fireproof ABS UL-94V0
IDC Pin	: Bronze & Tinned

Category 6A Shielded Lockable Keystone Outlet/Key

Electrical Specifications

Insulation Resistance	:	500M ohms (min.)
Contact Resistance	:	20m ohms (max.)
Current Rating:	:	1.5 Amps
DC Resistance	:	0.1 ohms (max.)
Withstanding Voltage	:	1000 VAC RMS @ 60Hz/1min.

Environmental Specifications

Operating Temperature	:	-40 to +70°C
Storage Temperature	:	-10 to + 60°C
Operating Humidity	:	10% to 90% PH

Ordering Information

Product Code	Description
12349	Lockable Keystone Shielded Outlet, 90DG C6A
15190	Key for Lockable IO