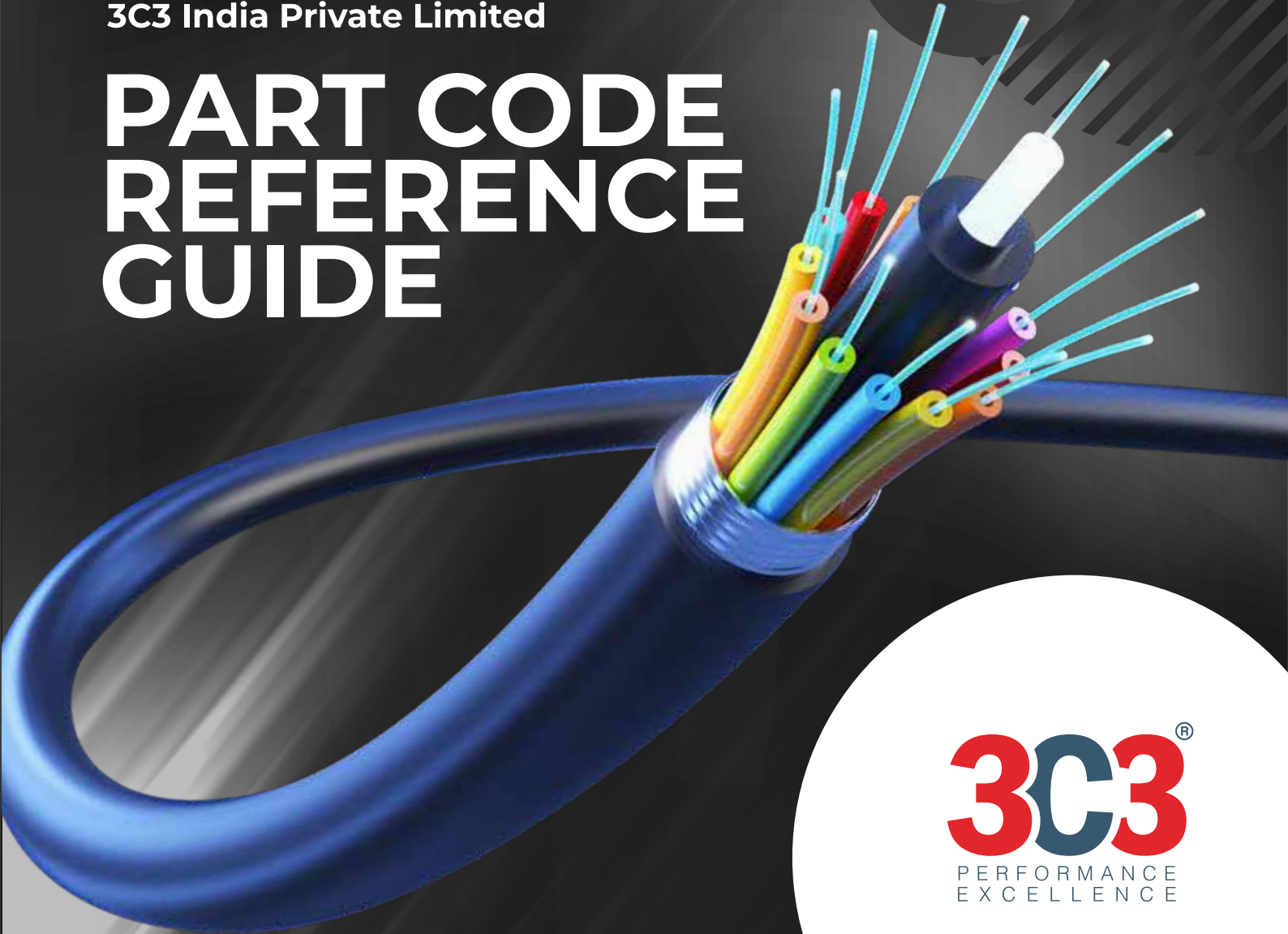


3C3 India Private Limited

PART CODE REFERENCE GUIDE





About us

A Make-In-India, Quality-Driven Organization Producing High Quality Products in Passive Networking Solutions in both Copper and Fiber

We are one of India's leading Structured Cabling Manufacturers for Passive Networking Solutions. Since our launch in 2013 under the "Make in India" initiative, we are dedicated to creating innovative and sustainable connectivity solutions for clients around the globe. We are a technology-driven company which is ISO 9001:2015, ISO 14001:2015 and 45001:2018 ISO certified, adhering to all ANSI/TIA and ISO/IEC Structured Cabling & Components Standards.

Our range of offerings includes Copper Solutions, Fiber Optic Solutions, High-Density Data Center Solutions, FTTH Solutions, IoT Solutions & Telecom Solutions. We also provide structured cabling solutions in IT, Telecom, IoT & Security Infrastructure for addressing end-to-end requirements adhering to global standards.

Through our in-depth domain knowledge and about a decade of experience, we ensure that we tailor innovative solutions which enable convenience for our clients. We research, design and develop high-quality products with a dedicated team of technical experts and engineers. Our innovative product portfolio of passive cable connection in copper technology and fiber optic technology is something our clients trust us with. The 3C3 Production unit is in itself a state of the art facility at the KIADB Industrial Area, Bidadi in Bengaluru, and home to our end-to-end production cycle.

With the motto of 'Performance & Excellence', we consistently strive to maintain our hard-earned reputation in the local and global marketplace. We stand strong on the pillars of customer experience and quality.

We have a PAN India presence with direct sales teams in Bangalore, Chennai, Mumbai, Hyderabad, Delhi, Kolkata, Pune, Kochi & Vijayawada supported by our Certified System Integrators across the frontiers and are also expanding across Singapore, the Middle East and globally.



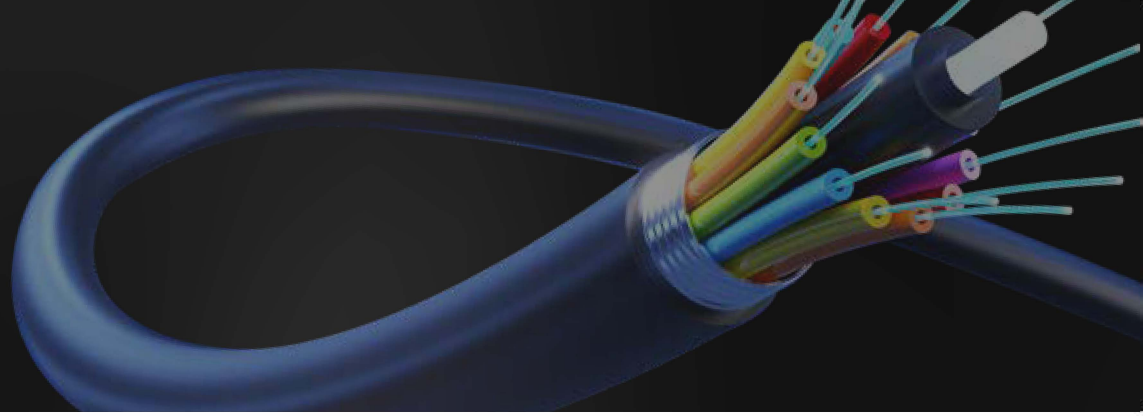


TABLE OF CONTENTS

Copper Solutions

Copper Cables
RJ45 Outlets
Face Plate
Copper Panels
Copper Patch Cord
FTP Plug

Test & Measurement Solutions

Copper Tools / Test Instrument
Fiber Tools / Test Instrument

Fiber Solutions

Fiber Cable
Fiber Panel
Fiber Patch Cord
Fiber Joint Enclosure

Unique Solutions

Cable Bunching Solution Unique Products & Solutions

Data Center Solutions

Copper Solutions
Fiber Solutions

Pathway Solutions

Overhead Optical Pathway System
OverHead Mesh System

FTTx Solutions

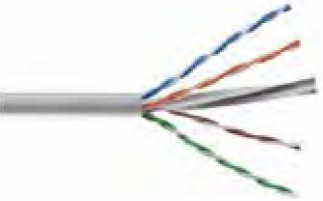
FTTH Drop cable
PLC Splitter
Fiber Distribution Box
FTTH Customer Outlet
Simplex patch Cord
Pigtail

COPPER CABLES



Cat6A

- 10300** High Speed 10G Ethernet U/UTP, 23 AWG, 500 MHz, Class EA, LSZH Cable -C6A
- 10310** High Speed 10G Ethernet S/FTP, 23 AWG, 500 MHz, Class EA, LSZH Cable -C6A
- 10330** High Speed 10G Ethernet F/UTP, 23 AWG, 500 MHz, Class EA LSZH Cable- C6A
- 10354** High Speed 10G Ethernet U/FTP, 23 AWG, 500 MHz, Class EA LSZH Cable- C6A



Cat6

- 10200** High Speed Gigabit Ethernet U/UTP, 23 AWG, 250 MHz, Class E, LSZH Cable - C6
- 10202** High Speed Gigabit Ethernet U/UTP, 23 AWG, 250 MHz, Class E, FRPVC Cable - C6
- 10204** High Speed Gigabit Ethernet U/UTP, 23 AWG, 250 MHz, Class E, LSZH Cable - C6
- 10002** High Speed Gigabit Ethernet U/UTP, 24 AWG, 250 MHz, Class E, FRPVC Cable - C6



Cat6

High Speed Gigabit Outdoor Rated Cables, C6

- 10200-0006** High Speed Gigabit Ethernet U/UTP 250 MHz, Class E, Inner LSZH, Outer FRPVC, Outdoor Cable, C6
- 10201-0026** High Speed Gigabit Ethernet U/UTP 250 MHz, Class E, ECCS Tape Armored Inner PVC, Outer PE, Outdoor Cable, C6
- 10201-0016** High Speed Gigabit Ethernet U/UTP 250 MHz, Class E, GI Wire Armored, Inner PVC, Outer FRPVC, Outdoor Cable, C6

RJ45 OUTLETS



Cat6A

- 12319** Toolless Keystone Shielded Outlet, 180° C6A
- 12364** Toolless Keystone Unshielded Outlet 180° C6A, White
- 12366** Toolless Keystone Unshielded Outlet 180° C6A, Black



Cat6

Keystone Unshielded Outlet, 180DG C6

Keystone Unshielded Outlet, 180DG C6 (Press fit)

12200	Blue
12203	Yellow

12204	White
12206	Black

12220	Blue
12223	Yellow

12224	White
12226	Black

FACE PLATE



- 14041** Face Plate Shuttered UK Style, Single
- 14042** Face Plate Shuttered UK Style, Dual
- 14044** Face Plate Shuttered UK Style, Quad
- 14440** Back Box for UK Style Face Plate

COPPER PANELS



11800 Copper Panel Straight, 24 Modular Port Unloaded, 1U, Unshielded, Wire Manager Included

11820 Copper Panel Staggered, 24 Modular Port Unloaded, 1U, Shielded, Wire Manager Included

COPPER PATCH CORD



Cat6A

High Speed 10 Gigabit 26AWG S/FTP Patch Cord Grey, LSZH, C6A

23350-0100	1M
23350-0200	2M

23350-0300	3M
23350-0500	5M

23350-0700	7M
23350-1000	10M



High Speed 10 Gigabit 24AWG U/UTP Patch Cord Grey, LSZH, C6A

20350-0100	1M
20350-0200	2M

20350-0300	3M
20350-0500	5M

20350-0700	7M
20350-1000	10M



Cat6

High Speed Gigabit 24AWG U/UTP Patch Cord, LSZH, C6

	Blue	Green	Yellow	Grey	Red
1M	20200-0100	20210-0100	20230-0100	20250-0100	20220-0100
2M	20200-0200	20210-0200	20230-0200	20250-0200	20220-0200
3M	20200-0300	20210-0300	20230-0300	20250-0300	20220-0300
5M	20200-0500	20210-0500	20230-0500	20250-0500	20220-0500

FTP PLUG



12806 Field Termination Plug Unshielded

12919 Field Termination Plug Shielded

FIBER CABLE

Singlemode and Multimode

High Link Fiber Optic, Tight Buffered Indoor Cable, FR-LSZH



	OS2	OM3	OM4
06 Fibers	51005-0006	51305-0006	51405-0006
12 Fibers	51005-0012	51305-0012	51405-0012
24 Fibers	51005-0024	51305-0024	51405-0024

High Link Fiber Optic, Armoured, Uni-loose Tube Outdoor Cable, Gel filled, Peripheral Steel rod Strength Member, Single Sheath Black HDPE



	OS2	OM3	OM4
06 Fibers	53011-0006	53311-0006	53411-0006
12 Fibers	53011-0012	53311-0012	53411-0012

High Link Fiber Optic, Armoured, Multi-loose Tube Outdoor Cable, Gel filled, CSM FRP, Single Sheath Black HDPE



	OS2	OM3	OM4
24 Fibers	53031-0024	53331-0024	53431-0024
48 Fibers	53031-0048	53331-0048	53431-0048

FIBER PANEL

Rack Mountable Fiber Panel, Unloaded

61901-1001 Fiber Panel, 1U, 2Cutout, 1x24F Splice Tray, cable Spool Unloaded



Adapter Plate Loaded Duplex, 2 cutout

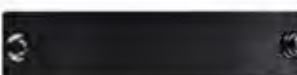


	OS2	OM4
3LC Duplex	63023-0003	63423-0003
3SC Duplex	63043-0003	63443-0003
6LC Duplex	63023-0006	63423-0006
6SC Duplex	63043-0006	63443-0006

Adapter Plate Unloaded Duplex, 2 cutout



	OS2
3LC Duplex	63025-0003
3SC Duplex	63045-0003
6LC Duplex	63025-0006
6SC Duplex	63045-0006



63903-0000 Blank Adapter Plate, 2cutout

FIBER PANEL



Rack Mountable Fiber Panel, Loaded

Fiber Panel Sliding, 2 Cutout, Loaded with Duplex Adapters, Pigtails, Splice Tray, 1U

LC		OS2	OM3	OM4
	6F	61021-1006	61321-1006	61421-1006
12F	61021-1012	61321-1012	61421-1012	
24F	61021-1024	61321-1024	61421-1024	
SC	6F	61041-1006	61341-1006	61441-1006
	12F	61041-1012	61341-1012	61441-1012
	24F	61041-1024	61341-1024	61441-1024



Fiber Panel Sliding, Single Adapter Plate, Loaded with Duplex Adapters, Pigtails, Splice Tray, 1U

LC		OS2	OM3	OM4
	48F	61020-1048	61320-1048	61420-1048
SC	48F	61040-1048	61340-1048	61440-1048



Wall Mountable Fiber Panel

61905-0001 Fiber Panel Wall Mount, Single door, 1 X 24F Splice Tray, Unloaded, 24F

61906-0002 Fiber Panel Wall Mount, Double door, 2 X 24F Splice Tray, Unloaded, 48F

61906-0004 Fiber Panel Wall Mount, Double door, 4 x 24F Splice Tray, Unloaded, 96F



Adapter Plate Loaded Duplex, Wall Mount

	OS2	OM4
3LC Duplex	63027-0003	63427-0003
3SC Duplex	63047-0003	63447-0003
6LC Duplex	63027-0006	63427-0006
6SC Duplex	63047-0006	63447-0006



64321 Splice Tray, 24F



DIN Rail Mountable Fiber Panel

61027-1006 DIN Rail Patch Panel, Loaded with 3LCU Duplex Adapters, 6LCU Pigtails, OS2

61027-1012 DIN Rail Patch Panel, Loaded with 6LCU Duplex Adapters, 12LCU Pigtails, OS2

FIBER PATCH CORD



Singlemode

High Link Fiber Optic Patch Cord, Duplex, 2mm, OS2

	LCU to LCU	LCU to SCU	SCU to SCU
3M	72020-0030	72040-0030	74040-0030
5M	72020-0050	72040-0050	74040-0050
10M	72020-0100	72040-0100	74040-0100



Multimode

High Link Fiber Optic Patch Cord, Duplex, 2mm

	OM3			OM4		
	LCU to LCU	LCU to SCU	SCU to SCU	LCU to LCU	LCU to SCU	SCU to SCU
3M	72320-0030	72340-0030	74340-0030	72420-0030	72440-0030	74440-0030
5M	72320-0050	72340-0050	74340-0050	72420-0050	72440-0050	74440-0050
10M	72320-0100	72340-0100	74340-0100	72420-0100	72440-0100	74440-0100



Armoured Fiber Optic Patch Cord

High Link Fiber Optic Patch Cord, Armoured, Duplex, 3mm

	OS2			OM4		
	LCU to LCU	LCU to SCU	SCU to SCU	LCU to LCU	LCU to SCU	SCU to SCU
3M	72023-0030	72043-0030	74043-0030	72423-0030	72443-0030	74443-0030
5M	72023-0050	72043-0050	74043-0050	72423-0050	72443-0050	74443-0050
10M	72023-0100	72043-0100	74043-0100	72423-0100	72443-0100	74443-0100



Rugged Fiber Optic Patch Cord

High Link Fiber Optic Patch Cord, Ruggedized, Duplex, 7mm

	OS2			OM4		
	LCU to LCU	LCU to SCU	SCU to SCU	LCU to LCU	LCU to SCU	SCU to SCU
3M	72029-0030	72049-0030	74049-0030	72429-0030	72449-0030	74449-0030
5M	72029-0050	72049-0050	74049-0050	72429-0050	72449-0050	74449-0050
10M	72029-0100	72049-0100	74049-0100	72429-0100	72449-0100	74449-0100

FIBER OPTIC PIGTAIL



Fiber Optic Pigtail

High Link Fiber Optic Pigtail, 1.5M

	OS2	OM3	OM4
LC	71001-0015	71301-0015	71401-0015
SC	73001-0015	73301-0015	73401-0015



COPPER SOLUTIONS



Copper Pre terminated Cable

Pre Terminated Copper Trunk Cable, 20 inch Breakout, Grey, LSZH, C6A, 10M

	Shielded		Unshielded	
	Female to Female	Male to Male	Female to Female	Male to Male
6 Runs	17451-1000	17455-1000	17450-1000	17454-1000
12 Runs	17351-1000	17355-1000	17350-1000	17354-1000



High Density Jack Panel

High Density Copper Panel Straight, 24 Modular Port Unloaded, 0.5U wire manager included



	Shielded	Unshielded
	16810-0000	16800-0000



Copper Traceable Patch Cord

High Speed 10 Gigabit 26AWG U/FTP Traceable Patch Cord Grey, LSZH, C6A

17651-0100	1M	17651-0300	3M	17651-0700	7M
17651-0200	2M	17651-0500	5M	17651-1000	10M

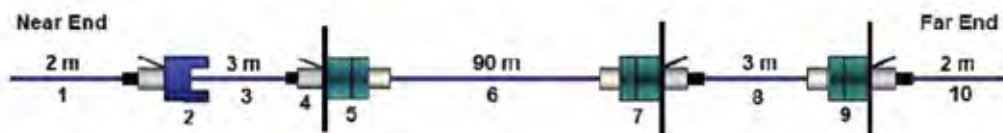


Copper Slimline Patch Cords

High Speed Gigabit 28AWG UTP Slim Patch Cord, Grey, LSZH

	1M	2M	3M	5M
Cat 6A	17650-0100	17650-0200	17650-0300	17650-0500
Cat 6	17550-0100	17550-0200	17550-0300	17550-0500

3rd Party Performance Test for 4 Connector Channel as per ANSI/TIA-568.2-D



Component Id	Manufacturer	Description	Part number
1, 10	3C3	S/FTP LSZH Patch Cord	23350-0200
2	3C3	Faceplate / Shielded Outlet	14041 / 12319
3	3C3	S/FTP LSZH Single-Ended Patch Cord	85601-0300
4	3C3	Shielded Field Terminable Plug	12919
5, 7	3C3	Patch Panel / Shielded Outlet	11810 / 12319
6	3C3	S/FTP LSZH Horizontal Cable	10310
8	3C3	S/FTP LSZH Single-Ended Patch Cord	85600-0300
9	3C3	Patch Panel / Shielded Outlet	11820 / 12319

FIBER SOLUTIONS



Pre-Terminated Fiber Optic Cable

Pre Terminated Fiber Optic Breakout Cable, LCU to LCU, Duplex, 20M

	06 Fiber	12 Fiber	24 Fiber
OS2	72025-0200	72027-0200	72028-0200
OM4	72425-0200	72427-0200	72428-0200



Ultra High Density Fiber Patch Panel

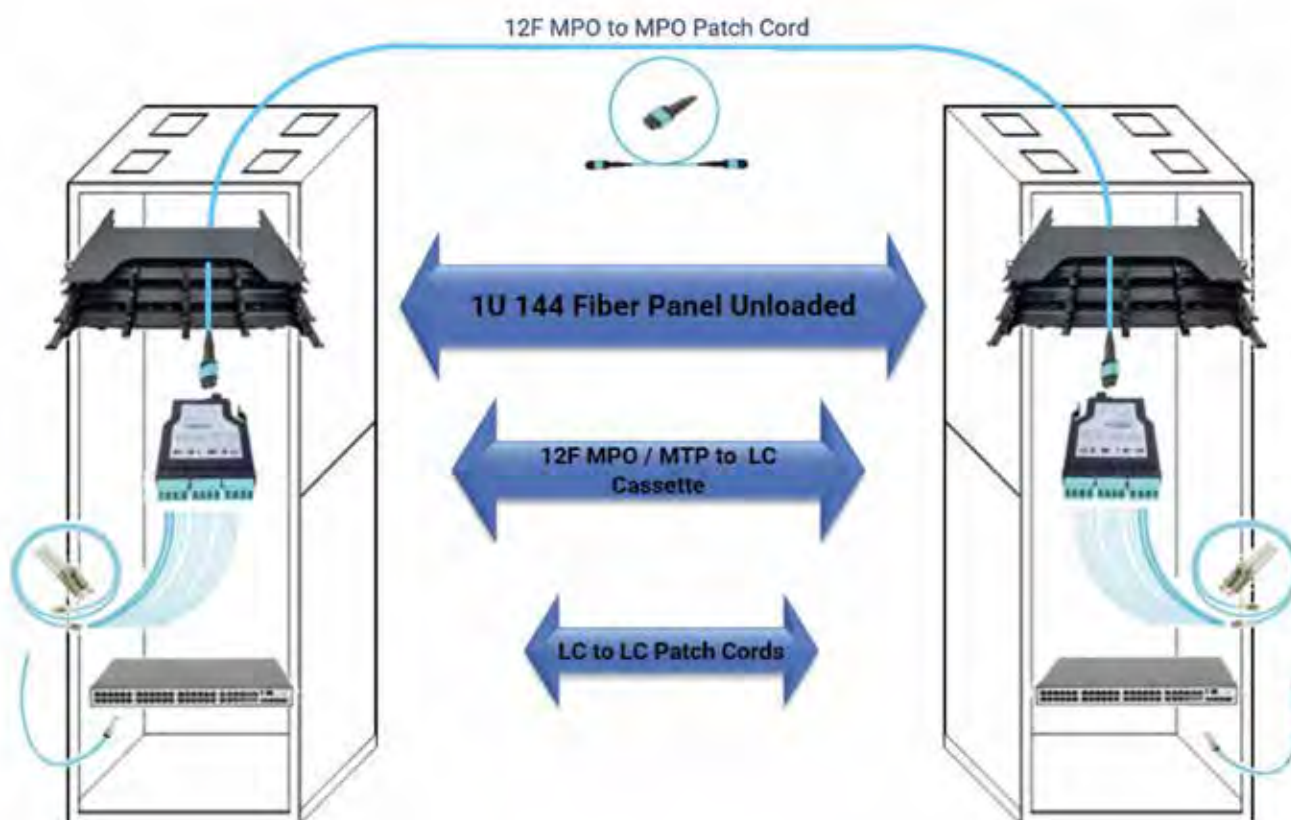
144 (12 Slot x 12F)	144 (18 Slot x 8F)
66010	66020



Ultra High Density Cassettes

Type	144 (12 Slot x 12F)		144 (18 Slot x 8F)	
	OM4	OS2	OM4	OS2
MPO-LC Cassette	66105	66145	66124	66164
LC Splice Cassette	66135	66175	-	-
MPO-MPO Cassette	66186	66186	-	-

Illustration of Ultra High-Density Pre-terminated Fiber Solution



FIBER SOLUTIONS



High Density Fiber Patch Panel

	1U-96F	2U-192F
Without Splice Tray	61902-1000	61902-2000
With Splice Tray	61902-1004	61902-2008

High Density Fiber Cassette / Adapter Plate

	OM4	OS2
2 x 12F MPO-LC	66111	66151
1 x 12F MPO-LC	66100	66140
24F - 6 LC Quad Plate	66200	66210
6 x MPO Plate	66221	

MPO Patch Cords

MPO to MPO, Type B

	OM4		OS2	
	12F	8F	12F	8F
3M	67212-0030	67215-0030	67012-0030	67015-0030
5M	67212-0050	67215-0050	67012-0050	67015-0050
10M	67212-0100	67215-0100	67012-0100	67015-0100

MPO to LC, Type B

	OM4		OS2	
	12F	8F	12F	8F
3M	67221-0030	67220-0030	67021-0030	67020-0030
5M	67221-0050	67220-0050	67021-0050	67020-0050
10M	67221-1000	67220-1000	67021-1000	67020-1000

High Density Fiber Patch Cord

High Density High Link LCU to LCU Fiber Optic Patch Cord, Duplex

	OM4	OS2
3M	72430-0030	72030-0030
5M	72430-0050	72030-0050
10M	72430-0100	72030-0100

High Density Traceable Patch Cord

High Density High Link LCU to LCU Fiber Optic Traceable Patch Cord, Duplex

	OM4	OS2
3M	72434-0030	72034-0030
5M	72434-0050	72034-0050
10M	72434-0100	72034-0100



FTTH Drop cable

FTTH Indoor Drop Cable, Black LSZH,

	1F	2F
Indoor Cable	80000-0001	80000-0002
Outdoor Cable	80100-0001	80100-0002



Fiber Patch Panel - Non Telescopic

Fiber Panel, Non Telescopic, Loaded with SC Simplex Adapters, SC Pigtails, Splice Tray, OS2, 1U

	SCU	SCA
6F	83114-1100	83124-1100
12F	83115-1100	83125-1100
24F	83116-1100	83126-1100



PLC Splitter

PLC Splitter Rack Mount

	SCU	SCA
1:16	81403	81503
1:32	81404	81504
2:16	81413	81513
2:32	81414	81514



PLC Splitter Wall Mount

	SCU	SCA
1:2	81600-0000	81700-0000
1:4	81601-0000	81701-0000
1:8	81602-0000	81702-0000
2:2	81610-0000	81710-0000
2:4	81611-0000	81711-0000
2:8	81612-0000	81712-0000



PLC Splitter ABS

	SCU	SCA
1:16	81203-0000	81303-0000
1:32	81204-0000	81304-0000



PLC Splitter Blockless

	SCU	SCA
1:2	81800	81900
1:4	81801	81901
1:6	81802	81902

Fiber Distribution Box

Fiber Distribution Box Loaded With Adapter and Pigtail



	SCU	SCA
2F	83012-1000	83022-1000
4F	83013-1000	83023-1000
12F	83015-1000	83025-1000
24F	83016-1000	83026-1000

FTTH Customer Outlet

FTTH Customer Outlet, Loaded with Adapter and Pigtail



	SCU	SCA
1F	83211-1000	83221-1000
2F	83212-1000	83222-1000
4F	83213-1000	83223-1000

Fast Field Assembly Connector

Fast Field Assembly Connector Single Mode



SCU	SCA
91210-0000	91200-0000

Simplex Patch Cord

Fiber Optic Patch Cord, 2mm Simplex, OS2



	SCU to SCU	SCA-SCA	SCU-SCA
2M	82223-0020	82003-0020	82023-0020
3M	82223-0030	82003-0030	82023-0030
5M	82223-0050	82003-0050	82023-0050

Pigtail

Fiber Optic Pigtails OS2, 1.5M



SCU	SCA
82291-0015	82091-0015

JOINT ENCLOSURE



- 64011** Joint Enclosure, Outdoor, Cylindrical, 12 Fiber
- 64012** Joint Enclosure, Outdoor, Cylindrical, 24 Fiber
- 64013** Joint Enclosure, Outdoor, Cylindrical, 48 Fiber
- 64251** Joint Enclosure, Outdoor, IP68, Cylindrical, 12 Fiber

TOOLS/TEST INSTRUMENTS



Copper Tools

- 41000 UTP/STP Cable Stripper with IDC Punch Down Tool, Yellow
- 41010 Universal Cable Jacket Stripper with Cable Cutter, Yellow
- 41040 RJ45, RJ11 Crimping Tool with Cable Tester, Blue
- 41070 Rapid Termination Tool, Blue
- 41090 Cooper Tool Kit, Black
- 41100 POE Tester
- 41110 LAN Tracker
- 41120 LAN Tester
- 41130 Cable Tracer and Toner
- 41140 Data Cable Length Measuring & Fault Locator



Fiber Tools

- 42000 Optical Fiber Fusion Splicing Machine Kit
- 42010 High Precision Cleaver
- 42090 Fiber Optic Fusion Splicing Tool Kit
- 42142 OTDR 5.6 inches, SM and MM
- 42200 Fiber Cassette Cleaner
- 42210 One Click Cleaner LC
- 42220 One Click Cleaner SC
- 42230 MPO/MTP Connector Cleaner

CABLE BUNCHING SOLUTIONS



- 41050 Cable Bunching Tool
- 40401 Velcro Blue, 19mm
- 40461 Velcro Black, 19mm

UNIQUE PRODUCTS & SOLUTIONS



- 12254** Lockable Key Stone Unshielded Outlet, 90°, C6 white
- 15190** Key For Lockable Outlet
- 13339** Inline Coupler, IDC Termination Shielded C6A
- 13224** Inline Coupler, IDC Termination Unshielded C6
- 13319** Inline Coupler Shielded C6A
- 13206** Inline Coupler Unshielded C6
- 15020** Port Block, RJ45 Plug
- 15290** Key for Port Block & Lockable Patch Cord
- 15650** 1:2 Port Splitter, C6

Copper Lockable Patch Cord

High Speed Gigabit 24AWG U/UTP Lockable Patch Cord LSZH, C6

	Blue	Green	Red	Yellow	Grey
1M	27200-0100	27210-0100	27220-0100	27230-0100	27250-0100
2M	27200-0200	27210-0200	27220-0200	27230-0200	27250-0200
3M	27200-0300	27210-0300	27220-0300	27230-0300	27250-0300
5M	27200-0500	27210-0500	27220-0500	27230-0500	27250-0500



- 15290** Key for Port Block & Lockable Patch Cord



Overhead Optical Pathway System

Overhead Optical Pathway System (OOPS) which is designed to protect and route fiber optic patch cords, cable assemblies to and from network cabinets, ODF and other application server.

Tool-less products boast easy and quick installation including snap-on cover, hinged cover option as well as quick exits and easy maintenance.

Overhead Optical Pathway Solutions (OOPS)

- 45C00-0000** Straight section with Cover
 - 45C40-0001** End Cap
 - 45C1E-0000** Elbow E- Type (0-90° Horizontal, 1-45° down, 2-45° Up, 3-90° Down, 4- 45° Horizontal)
 - 45C5E** Connector Kit (E- 0- Kit S, 1- Kit C)
 - 45C60-0000** Storage Tray with Cover
 - 45C70-0000** Reducer with Cover
 - 45C9E** Support Bracket
E- Type (0- Anchor Bracket, 1- Wall, 2- Rack, 3- Trapeze Bracket)
 - 45C15-000X** Express dropout, (X-0 with Trumpet Flare, 0-1 with 1 hole, 0-2 with 2 hole, 0-3 with 3 hole)
 - 45C16** Flexible Pipe
- C= Size (0-2"x2", 1 - 4"x4", 2 - 4"x6", 3- 4"x10", 4 - 4"x 12")**



Overhead Mesh System

The OverHead Mesh System (OHMS) is designed to route and manage copper data cables and power cables within data centers, connected buildings and industrial automation applications.

OverHead Mesh System tray, utilizes high quality mechanical strength wires welded in a grid pattern, producing a strong, versatile and economical cable support system. These prefabricated fittings are a time-saving and cost effective alternative to field-fabricated horizontal fittings.

OverHead Mesh Solutions (OHMS)

44CD0	Straight Section
44CD1	Elbow
44CD2	Horizontal T
44CD3	Jointer Kit, pack of 50
44CD4	Connector Kit, pack of 50
44CD5-0000	Support Bracket XX –Support Bracket (01- Wall, 02- Floor, 05- Trapeze)
44CD5-04YY	Dropout YY – Type (00- Inside Dropout, 01- Side/End Cable drop out)
44CD9-XXXX	XXXX = Support Accessories 0000 – Grounding Bolt 0001 – End Cap 0002 – Finishing paint

C = Depth in inches (0 – 2", 1 – 4", 2 – 6")

D = Width in inches (0 – 6", 1 – 12", 2 – 18", 3 – 24")

40510	Manual Cutter for OHMS
40511	Manual Cutter Replacement Blade
40590	1M thread rod with Cover

#PartnerWith3C3



3C3 Authorized Partner Program

Partners are the caravan of our organization. The 3C3 Authorized Partner Program is a one of the comprehensive journeys that encourage the engineers and technicians to learn essential skills of structured cabling systems. The training program is designed to impart technical knowledge on fundamental skills to installers on how to execute safely and effectively.

It ensures you have a whole access to 3C3's broad range of industry solutions which helps in delivering a structured, long term performance model. The course sets the foundation and hands-on experience for both copper and fiber-based structured cabling system installation. It begins with an overview of standards of copper transmission principles, and general implementation safety practices associated with copper and fiber cabling.

A significant amount of time is spent on best practices for the installation, termination & testing as well as troubleshooting the copper and optical fiber cable installations. In addition, this program covers the project planning role of site safety, site surveys, blueprint/floorplan reading, bonding and grounding practices, Installation tools & testers, maintenance, and troubleshooting.

As a 3C3 Authorized Partner, you are authorised to install the solutions offered by 3C3 and can apply for 25 year performance warranty for quality designed, installed and tested structured cabling system.

Apart from the Certified Installer Program, we also have a dedicated training program for Data Center Design, which will provide technical insights on Data Center solutions as well as the latest technology updates and installation training.

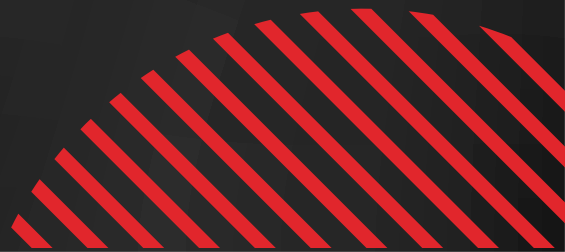
Come and Join Us!!

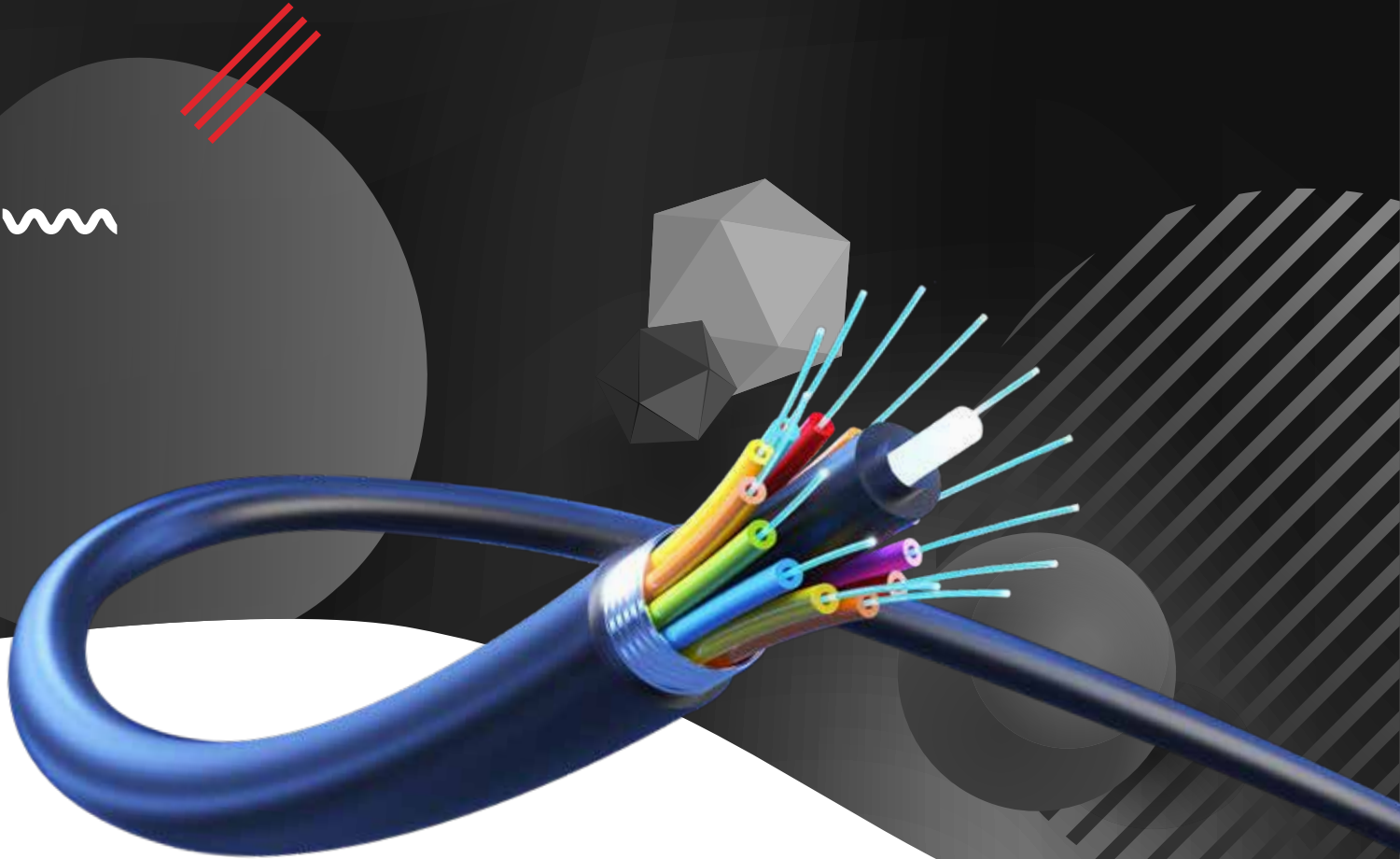
THINK SOLUTIONS THINK 3C3



9 YEARS OF **#CONNECTIVITYWITHEXCELLENCE**

THANK YOU FOR BEING AN
INTEGRAL PART OF OUR JOURNEY.
YOUR SATISFACTION IS WHAT MOTIVATES
US TO REACH GREATER HEIGHTS!





3C3 India Private Limited

No. 8A, Bidadi Industrial Area
2nd Phase, Sector-1, Ramanagar Taluk,
Ramanagar District 562109

Telephone: 2991 1144

E-mail: sales@3c3.in

Website: www.3c3.in

Sales Office

World Trade Centre,
Unit No 2201A, 22nd Floor,
Brigade Gateway Campus,
Mallechwaram (W),
Bengaluru- 560055

