



# INDUSTRIAL **ETHERNET SOLUTIONS**

**3C3<sup>®</sup>**  
PERFORMANCE  
EXCELLENCE



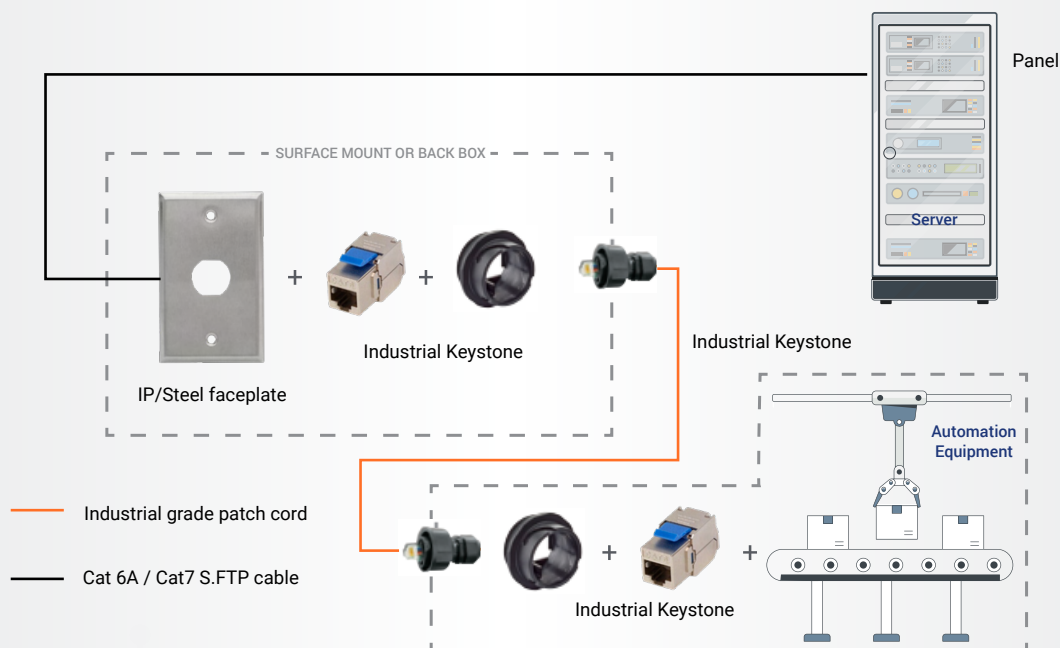


# INDUSTRIAL ETHERNET SOLUTIONS

In today's dynamic and technologically driven industrial environments, the plant floor has become a critical hub of activity, requiring robust, high-performance transmission media to ensure seamless connectivity and efficient operations. The importance of transmission media goes far beyond simple signal transfer; it must integrate seamlessly into diverse applications and optimize signal performance under any environmental condition—be it extreme temperatures, vibrations, or high electromagnetic interference.

At 3C3, we understand these challenges and are dedicated to providing innovative, reliable, and durable solutions that empower modern industries. Our transmission solutions are not only designed to meet stringent performance requirements but can also be tailored to address the unique needs of our customers.

Whether it's ensuring uninterrupted connectivity from the controller to the equipment on the factory floor or enabling reliable data communication across complex networks, you can depend on 3C3 to deliver. Our advanced solutions are engineered to maximize uptime, improve operational efficiency, and support seamless communication, giving your operations the resilience and reliability they demand.



## Trust 3C3 for

- **Customized Solutions:** Tailored to match your specific industrial needs.
- **Durability and Reliability:** Built to perform under the harshest conditions.
- **Seamless Connectivity:** Ensuring uninterrupted data flow across all equipment and systems.

With 3C3, transform your plant floor into a smart, future-ready environment optimized for peak performance and connectivity.

## Key Features



### Built for Rugged Applications:

Designed to withstand repeated retractable conditions, ensuring long-term durability.



### Reinforced Strength and Flexibility:

Engineered with a special high-strength, flexible central reinforcing element to maintain fiber integrity and bending properties.



### Enhanced Mechanical Strength:

Incorporates a large area of aramid-reinforced fiber optic cable to deliver exceptional mechanical resilience, even in demanding environments.

With 3C3, transform your plant floor into a smart, future-ready environment optimized for peak performance and connectivity.

# SMART FACTORY SOLUTIONS

Innovative Solutions for Industry 4.0 Technologies



In the era of Industry 4.0, smart factories demand reliable, efficient, and durable solutions to ensure seamless operations and optimal performance. Our product portfolio addresses these needs with cutting-edge technologies and exceptional durability. From advanced connectivity to power management and hardware organization, our solutions are built to empower modern industries.

## Cabling Solutions

### Industrial Ethernet Cables

#### Features

- Designed for high-speed data transmission with low latency.
- Robust insulation for resistance to harsh environments such as extreme temperatures, moisture, and vibrations.
- Options include Cat5e, Cat6, and Cat6a for varied industrial needs.

#### Applications

- Factory automation systems.
- Real-time data monitoring and transmission in manufacturing environments.



## Fiber Optic Cables

### Features

- Superior bandwidth and speed for long-distance data transmission.
- Immune to electromagnetic interference (EMI), ensuring uninterrupted operations in noisy industrial setups.
- Available in single-mode and multi-mode configurations.

### Applications

- Smart factories requiring high-speed communication between systems.
- Backbone networks for seamless integration of multiple devices and equipment.

## Ruggedized Connectivity Solutions

### Ruggedized Patch Cords

#### Features

- Built with reinforced outer jackets to resist abrasion, chemicals, and physical damage.
- Enhanced flexibility and performance in extreme temperatures.

#### Applications

- Outdoor and industrial environments where standard cables fail to withstand wear and tear.

### Connectors and Panels

#### Features

- Heavy-duty designs for secure and reliable connections.
- Available in various configurations for customized setups.
- Corrosion-resistant materials to ensure longevity in harsh environments.

#### Applications

- Critical industrial systems requiring stable connections under tough conditions.
- Applications in oil and gas, manufacturing, and transportation sectors.

## Power Management Solutions

### Surge-Protected Devices

#### Features

- Advanced protection against voltage spikes and surges.
- High surge handling capacity to safeguard sensitive equipment.
- Compact designs for easy integration into existing systems.

#### Applications

- Industrial facilities prone to power fluctuations.
- Protecting servers, controllers, and other critical electronic devices.

### Customizable Enclosures

#### Features

- Made from high-strength materials for maximum protection.
- IP-rated designs for protection against dust, water, and other environmental hazards.
- Modular configurations for easy scalability.

#### Applications

- Housing delicate electronic systems in industrial setups.
- Secure storage for control systems and networking equipment.

### Durable Racks

#### Features

- Sturdy construction with high load-bearing capacity.
- Multiple mounting options to accommodate a variety of equipment.
- Optimized designs for ventilation and cable management.

#### Applications

- Organizing server rooms and industrial IT setups.
- Supporting data center infrastructure and industrial hardware.

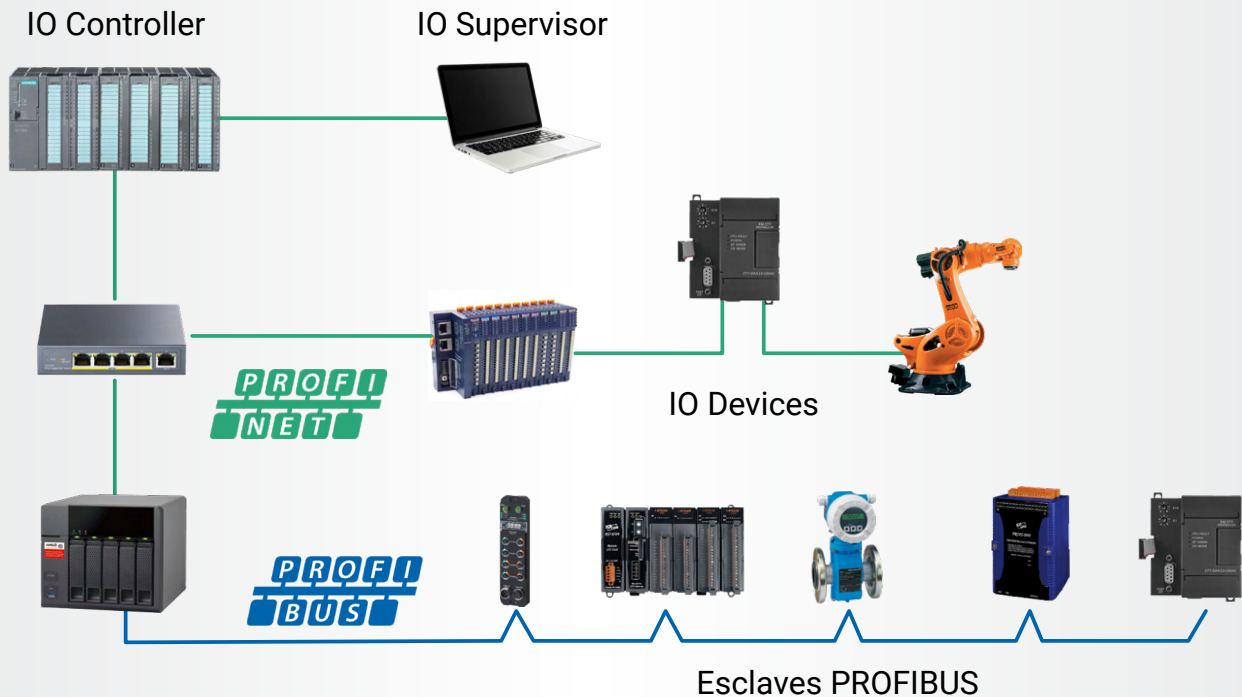
### Why Choose Our Solutions?

- Engineered for Industry 4.0: Designed with cutting-edge technology to meet the needs of smart factories.
- Unmatched Durability: Built to withstand the harshest industrial conditions.
- Scalable and Flexible: Tailored solutions to grow with your business needs.
- Comprehensive Product Range: Everything you need for cabling, connectivity, power management, and equipment organization under one roof.





# PROFINET/PROFIBUS SOLUTIONS



In the era of Industry 4.0, efficient communication is the backbone of Smart Factories. PROFINET and PROFIBUS are two leading industrial communication protocols that enable real-time data exchange, seamless automation, and efficient device integration. These protocols are critical for modern manufacturing and industrial environments, offering reliable communication infrastructure and control solutions.

## What are PROFINET and PROFIBUS?

**PROFINET:** An advanced industrial Ethernet standard designed for high-speed, deterministic communication, ensuring real-time data exchange between devices and systems.

**PROFIBUS:** A fieldbus communication protocol that facilitates reliable data transfer between controllers and devices in industrial environments.

Both protocols are essential for creating connected, automated systems that drive productivity and efficiency in Smart Factories.

## Roles and Benefits in Smart Factories

### COMMUNICATION INFRASTRUCTURE

- **Seamless Connectivity:** Both protocols provide robust networks for integrating a wide range of devices, such as sensors, actuators, and controllers.
- **Scalability:** Easily expand the communication network to accommodate additional devices as your factory grows.
- **Real-Time Data Exchange:** Enable high-speed communication for process monitoring and control, ensuring efficient decision-making.
- **Reliable Performance:** Designed for harsh industrial environments, ensuring stable operations even under extreme conditions.
- **Reduced Downtime:** Advanced diagnostics features enable quick identification and resolution of network issues, minimizing operational disruptions.

### DEVICES AND CONTROLLERS

- **Device Compatibility:** PROFINET and PROFIBUS support a wide variety of industrial devices, including PLCs (Programmable Logic Controllers), HMI (Human-Machine Interfaces), and industrial robots.
- **Enhanced Automation:** Simplify complex processes by enabling devices to communicate and collaborate seamlessly.
- **Precise Control:** Ensure accurate and synchronized operations across multiple devices, enhancing productivity and reducing errors.
- **Energy Efficiency:** Enable intelligent devices to optimize energy usage, contributing to cost savings and sustainability.

## Why Choose PROFINET and PROFIBUS?

**High Speed and Low Latency:** Ideal for real-time applications requiring instantaneous data transmission.

**Global Standards:** Widely adopted and supported by leading manufacturers, ensuring compatibility and interoperability.

**Future-Ready:** Designed to integrate seamlessly with Industry 4.0 technologies, such as IoT, edge computing, and AI-driven systems.

**Cost-Effective:** Reduced cabling requirements and efficient network management lower operational costs.

## Applications in Smart Factories

- **Automated Production Lines:** Synchronizing machines, robots, and sensors for smooth, automated workflows.
- **Process Control Systems:** Monitoring and controlling industrial processes in real-time.
- **Predictive Maintenance:** Using diagnostics and data exchange to predict and prevent equipment failures.
- **Energy Management:** Optimizing energy use across devices for sustainable operations.

## Optimize Your Smart Factory with PROFINET and PROFIBUS

By leveraging the power of PROFINET and PROFIBUS, manufacturers can build a robust, future-ready communication network that drives efficiency, productivity, and innovation. Whether you're modernizing an existing factory or building a new Smart Factory, these protocols provide the foundation for success.





# WAREHOUSING SOLUTIONS

Modern warehouses have evolved into highly efficient, automated hubs designed to handle the growing complexities of supply chain operations. At the heart of this transformation are passive solutions—critical components that provide the foundational infrastructure to support warehouse automation, ensure seamless connectivity, enhance operational efficiency, and prioritize safety.



## The Role of Passive Solutions in Warehousing

Passive solutions encompass non-active elements that are essential for creating a reliable and efficient warehouse environment. These components ensure that infrastructure can support advanced technologies while maintaining stability and longevity.

### Key Benefits



#### Enhanced Connectivity:

Reliable transmission media and structured cabling systems to ensure uninterrupted data flow.



#### Operational Efficiency:

Streamlined infrastructure reduces downtime and enhances equipment performance.



#### Safety and Security:

Comprehensive systems to protect both personnel and assets.



# Core Passive Solutions for Warehouses

## NETWORKING AND CABLING SOLUTIONS

Efficient networking is vital for warehouse automation and connectivity. Our cabling solutions ensure optimal data transmission and equipment reliability.

- **Industrial-Grade Ethernet Cabling:** Built to withstand harsh warehouse environments, offering high-speed data exchange and durability.
- **Fiber Optic Cabling:** Ideal for long-distance, high-bandwidth communication, ensuring rapid data transfer and minimal signal loss.
- **Cable Management Systems:** Organized and efficient cabling systems to reduce clutter, prevent damage, and simplify maintenance.

## SECURITY SOLUTIONS

Safety and security are paramount in any warehousing environment. Our solutions ensure comprehensive monitoring and protection of personnel, assets, and facilities.

- **Surveillance Systems:** High-definition cameras and advanced monitoring systems to provide 24/7 security coverage.
- **Access Control Systems:** Secure access management to restrict unauthorized entry and safeguard sensitive areas.
- **Fire Suppression Systems:** State-of-the-art systems designed to detect and suppress fires quickly, minimizing risks to people and property.

## Additional Features

- **Environmental Monitoring Systems:** Maintain optimal warehouse conditions by monitoring temperature, humidity, and air quality.
- **Power Management Solutions:** Uninterruptible power supplies and surge protection to ensure operational continuity.
- **Racks and Enclosures:** Durable, customizable solutions to securely house critical equipment and optimize space utilization.

## Why Choose Our Warehousing Solutions?

- **Reliability:** Proven track record of delivering robust and long-lasting solutions.
- **Customization:** Tailored solutions to meet your warehouse's unique requirements.
- **Expert Support:** Dedicated team to assist with design, installation, and maintenance.
- **Future-Ready:** Scalable systems designed to integrate seamlessly with emerging technologies.

## Transform Your Warehouse Today

By integrating our passive solutions into your warehousing operations, you can create a smarter, safer, and more efficient environment. Let us help you build the foundation for a connected and automated future.





# PLATFORM MONITORING SOLUTIONS



In today's fast-paced and interconnected world, platform monitoring solutions play a pivotal role in ensuring security, efficiency, and compliance across public spaces. Surveillance cameras, as a key element of these solutions, provide continuous monitoring and real-time insights to safeguard both individuals and assets.

## Key Benefits of Surveillance Cameras in Public Spaces

### CRIME PREVENTION

Surveillance cameras act as a visible deterrent to criminal activity, reducing incidents such as theft, vandalism, and trespassing. When crimes do occur, recorded footage provides valuable evidence for law enforcement investigations, enhancing the likelihood of successful prosecutions.

### PUBLIC SAFETY

By monitoring activities in public spaces, cameras help maintain order and discourage antisocial behaviors like loitering, harassment, and disorderly conduct. This contributes to a safer environment for everyone.

### CROWD MANAGEMENT

Cameras are essential in monitoring large gatherings or events, helping authorities prevent overcrowding and managing emergencies such as stampedes. Real-time data allows quick decision-making to ensure the safety of attendees.

### TRAFFIC MANAGEMENT

For transit hubs and busy public areas, surveillance cameras monitor passenger flows, reduce congestion, and optimize

traffic patterns. This improves the overall experience for commuters and ensures smoother operations in high-traffic zones.

### ACCESS CONTROL

Surveillance cameras strengthen access control by monitoring and recording entry and exit points. This provides an additional layer of security, ensuring restricted areas are protected and unauthorized access is prevented.

### EMERGENCY RESPONSE

In case of alarms or alerts, surveillance cameras provide immediate visual confirmation, enabling rapid response by emergency services. Real-time monitoring ensures quicker intervention, minimizing potential risks and damages.

### REGULATORY COMPLIANCE

Surveillance systems help organizations adhere to security regulations and industry standards. This is especially critical for facilities in sectors like transportation, healthcare, and government, where strict compliance is mandatory.

## Applications of Platform Monitoring Solutions

- **Transit Hubs:** Airports, railway stations, and bus terminals rely on cameras for passenger monitoring, baggage security, and crowd control.
- **Public Venues:** Parks, stadiums, and shopping malls use surveillance to ensure visitor safety and prevent disruptions.
- **Industrial Sites:** Factories and warehouses monitor operations and ensure regulatory compliance.
- **Urban Spaces:** Smart cities leverage cameras to enhance urban safety, manage traffic, and provide emergency support.

## Why Choose Our Platform Monitoring Solutions?

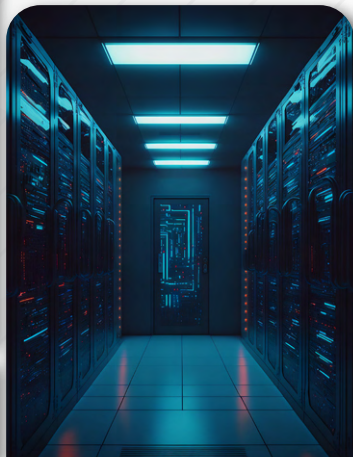
- **State-of-the-Art Technology:** High-resolution cameras with advanced features like night vision, motion detection, and AI-powered analytics.
- **Customizable Solutions:** Tailored systems designed to meet the specific needs of different environments.
- **Real-Time Insights:** Instant alerts and live feeds ensure proactive responses to emerging situations.
- **Scalability:** Solutions that grow with your needs, ensuring long-term value.
- **Expert Support:** Comprehensive service from installation to maintenance for seamless operations.

## Future-Ready Monitoring

With our platform monitoring solutions, you can embrace cutting-edge technology to transform public spaces into safer, more efficient, and smarter environments. Whether it's reducing crime, managing crowds, or optimizing traffic, our solutions are designed to meet today's challenges while preparing you for tomorrow.









## Manufacturing Plant: **3C3 India Private Limited**

Plot No.222, Sy No-25/1 & 26, Kolipura Village, Kasaba Hobli, Phase II KIADB Industrial Area, Obadenahalli Industrial Area, Doddaballapur, Bengaluru Rural, Karnataka, 561203

Web: [www.3c3.in](http://www.3c3.in)

Toll Free Number: **1800 202 0198**

### **CORPORATE OFFICE**

No.889, Sri Vishnu Arcade, 2nd Stage,  
Dr. M.C. Modi Hospital Road,  
Basaveshwaranagar, Bengaluru 560 079

PH: **080 4125 4077**

### **DELHI OFFICE**

Unit No.301, 3rd floor Manisha building  
Plot no 75-76 Nehru Place  
New Delhi 110019

PH: **011 4765 7210**

### **KOLKATA OFFICE**

Kankaria Estate, 9th Floor, 6 Little Russell Street,  
Kolkata - 700071, West Bengal

Toll Free Number: **18002020198**

### **CHENNAI OFFICE**

AWFIS, RR Towers IV, 7th Floor, Cabin no. - 7, Thiru Vi  
Ka Industrial Estate, SIDCO Industrial Estate, Guindy,  
Chennai, Tamil Nadu - 600032, India